



Llywodraeth Cymru
Welsh Government

THREE RIVERS COCKLE FISHERY 2020

PUBLIC NOTICE

issued pursuant to

Byelaw 24 (Temporary Closure of Shellfish Fisheries) of the former South Wales Sea Fisheries Committee

SUSPENSION OF TEMPORARY CLOSURE OF THE LLANYBRI, GWENDRAETH, FERRYSIDE, ST ISHMAEL AND TANYLAN COCKLE BEDS

THE WELSH MINISTERS GIVE NOTICE THAT, pursuant to Byelaw 24 (Temporary Closure of Shellfish Fisheries) of the former South Wales Sea Fisheries Committee (SWSFC)¹, the closure of the cockle (*Cerastoderma edule*) beds at:

Llanybri defined below ("Llanybri cockle beds") is suspended to enable cockle gathering on a **Single Tide** on **Weekends only** (from 00:01 on each Saturday morning to 23:59 on each Sunday night) with effect from **00:01 on the 19 September 2020 until 23:59 on the 31 December 2020.**

Gwendraeth defined below ("Gwendraeth cockle beds") is suspended to enable cockle gathering on a **Single Tide** on **Weekends only** (from 00:01 on each Saturday morning to 23:59 on each Sunday night) with effect from **00:01 on the 19 September 2020 until 23:59 on the 31 December 2020.**

Ferryside defined below ("Ferryside cockle beds") is suspended to enable cockle gathering on a **Single Tide** on **Wednesday & Thursday only** (from 00:01 on each Wednesday morning to 23:59 on each Thursday night) with effect from **00:01 on the 16 September 2020 until 23:59 on the 31 December 2020.**

St Ishmael and Tanylan defined below (St Ishmael and Tanylan cockle beds) is suspended to enable cockle gathering on a **Single Tide** on **Wednesday & Thursday only** (from 00:01 on each Wednesday morning to 23:59 on each Thursday night) with effect from **00:01 on the 16 September 2020 until 23:59 on the 31 December 2020.**

PLEASE NOTE: All other cockle beds in the Three Rivers Estuary area defined below ("the Area") remain **closed** to cockle gathering, with effect from **00:01 on the 1 May 2020 until 23:59 on the 30 April 2021**, pursuant to the Byelaw 24 Closure Notice dated 30 April 2020.

No person may, without the prior written authority of the Welsh Ministers, fish for, remove, take or disturb any cockles from any fishery closed pursuant to Byelaw 24 of the former SWSFC.

¹ Byelaws 21, 24, 47a & 48 of the former South Wales Sea Fisheries Committee now have effect, to the extent that they could have been made by the Welsh Ministers in a Statutory Instrument pursuant to Article 13(1) of and Schedule 3 to the Marine and Coastal Access Act 2009 (Commencement No. 1, Consequential, Transitional and Savings Provisions) (England and Wales) Order 2010 (S.I. 2010/630 (c.42)).

Llanybri cockle beds

The Llanybri cockle beds **opened** by this notice are within the estuary of the River Taf enclosed by:

- i. A line drawn between Laugharne Castle (NG Ref. SN 302108) and Black Scar (NG Ref. SN 311108).
- ii. A line drawn between Ginst Point (NG Ref. SN 332079) and Wharley Point (NG Ref. SN 340092).

Gwendraeth cockle beds

The Gwendraeth cockle beds **opened** by this notice are within the estuary of the River Gwendraeth enclosed by:

- i. A line drawn from Carmarthen Bay Holiday Park (NG Ref. SN 367073) in a south west direction along Pastoun Scar to Pen Tywyn Point (NG Ref. SN 357064) and
- ii. A line drawn across every river or stream flowing into the Gwendraeth estuary, along the seaward side of the bridges carrying the railway between Carmarthen Bay Holiday Park and RAF Pembrey Sands.

Ferryside cockle bed

The Ferryside cockle bed **opened** by this notice is within the estuary of the River Tywi enclosed by:

- i. A line drawn from mid-channel across the River Tywi, due east from the south-easternmost corner of Llansteffan Castle to the opposite shore at Ferryside and
- ii. A line drawn from mid channel between Wharley Point (NG Ref. SN 340092) to Saint Isfael Parish Church (NG Ref. SN 362084) and
- iii. A line drawn along the channel between the two mid way points

St Ishmael and Tanylan cockle beds

The St Ishmael and Tanylan cockle beds **opened** by this notice are within the estuaries of the River Tywi and Gwendraeth enclosed by:

- i. A line drawn from Carmarthen Bay Holiday Park (NG Ref. SN 367073) in a south west direction along Pastoun Scar to Pen Tywyn Point (NG Ref. SN 357064) and then in a north west direction to mid channel of the River Tywi.
- ii. A line drawn from St Isfael Parish Church (NG Ref. SN 362084) west to a point mid channel opposite Wharley Point (NG Ref. SN 340092).
- iii. A line drawn along the channel between the two mid way points.

The Area

The area known as Three Rivers Estuary, which consists of all tidal waters within the District of the former SWSFC which are enclosed by a line drawn from Ginst Point (NG Ref. SN 332079) to Pen Tywyn Point (NG Ref. SN 357064). Tidal waters are those limits as defined by the former SWSFC:

- i. A line drawn across the River Taf, between Laugharne Castle and Black Scar.

- ii. A line drawn across the River Tywi, true east from the south-easternmost corner of Llansteffan Castle to the opposite shore.
- iii. A line drawn across every river or stream flowing into the Gwendraeth estuary, along the seaward side of the bridges carrying the railway between Carmarthen Bay Holiday Park and RAF Pembrey Sands.

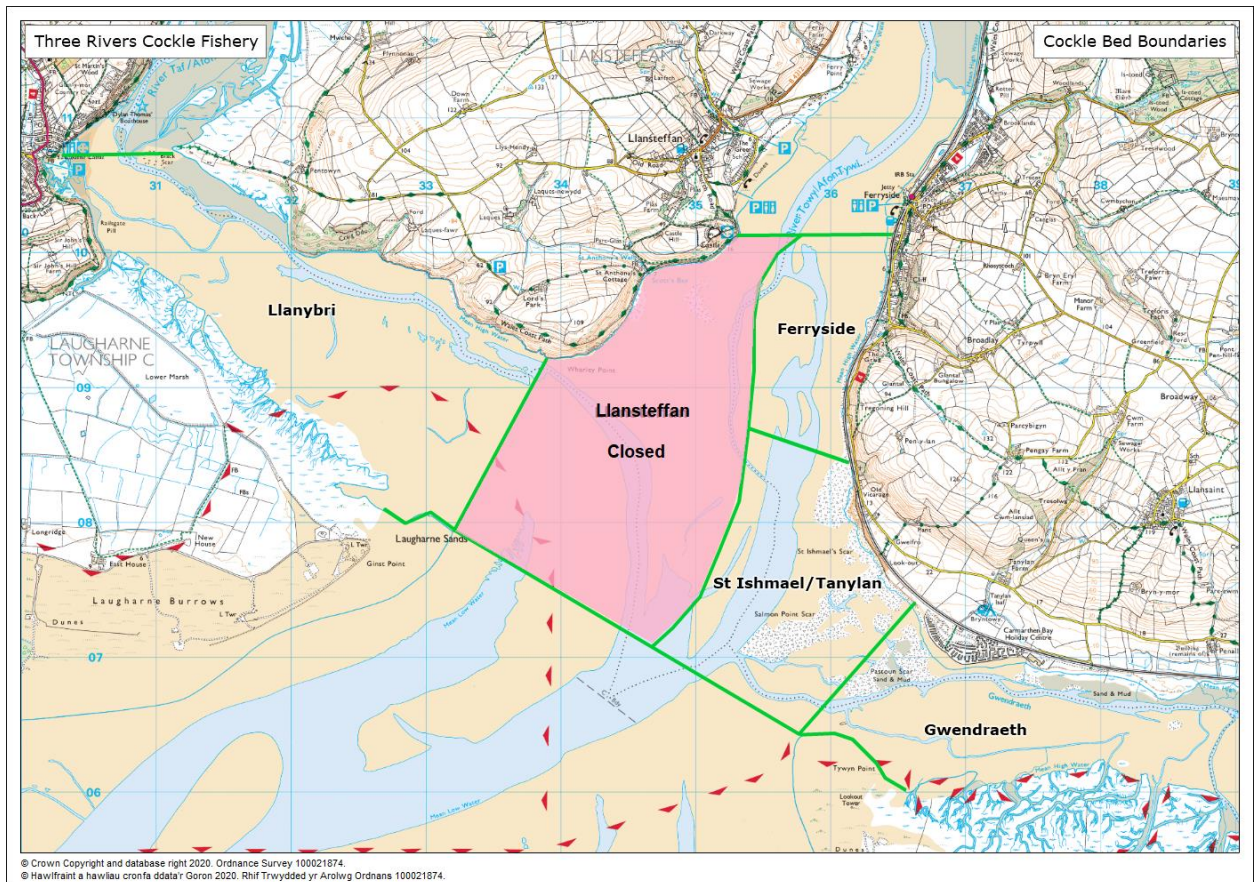
This Notice is given under authority of the Minister for Environment, Energy and Rural Affairs, one of the Welsh Ministers

Date of notice: 15 September 2020

Notes:

1. **Other legislation.** At Llanybri, Gwendraeth, Ferryside, St Ishmael and Tanylan cockle beds, any person who fishes for, removes, takes (or attempts to fish or take) or disturb cockles in reliance upon this Notice must also comply with all other applicable legislation relevant to that activity in this location.
2. **Three Rivers Estuary otherwise remains closed.** All cockle beds in the Three Rivers Estuary area, other than the suspension of the temporary closure at Llanybri, Gwendraeth, Ferryside, St Ishmael and Tanylan Cockle beds described in this notice, remain **closed** to cockle gathering (until **23:59 on the 30 April 2021** pursuant to the Byelaw 24 Closure Notice dated 30 April 2020). The beds have been temporarily closed for the purpose of protecting and assisting with the development of mainly immature or undersized cockles.
3. **Permits.** Without prejudice to the generality of Note 1, anyone wishing to fish for, take or remove cockles from the Llanybri, Gwendraeth, Ferryside, St Ishmael and Tanylan cockle beds must hold a permit issued pursuant to SWSFC Byelaw 47 (Permit to Take Cockles within the Three Rivers Estuary) and that activity must be undertaken in accordance with any conditions attached to that permit.
4. **Daylight hours.** Also without prejudice to the generality of Note 1, Byelaw 21 (Prohibition of Night Gathering of Cockles) of the former SWSFC provides that no person shall fish for or take cockles in this area between half an hour after sunset on any day and half an hour before sunrise on the following day.
5. **Single Tide.** Only the Low Water nearest to Midday (Local Time) should be fished. If doubt exist as to which Low Water is appropriate then the first Low Water of the day should be selected to minimise the risk to gatherers associated with vessels returning from the cockle beds under the hours of darkness.
6. **Total Allowable Catch.** There is currently an overall (i.e. collective) total allowable catch (TAC) of **250 tonnes** of cockles available on the Llanybri cockle beds, **200 tonnes** of cockles available on the Gwendraeth cockle bed, **200 tonnes** of cockles available on the Ferryside cockle bed and **100 tonnes** of cockles available at the St Ishmael & Tanylan cockle beds during the suspension of the temporary closure provided for in this Notice. Once that TAC has been reached, the fishery will be closed. This is necessary in order to comply with the Welsh Minister's environmental obligations.

7. **Weekend gathering only.** Due to the proximity of the live firing range at MOD Pendine, the suspension of temporary closure at **Llanybri** and **Gwendraeth** cockle beds (set out in this Notice) will only be applicable on Weekends (when live firing activity is least likely) during the period of this notice.
8. **Access.** Access to the Llanybri, Gwendraeth, Ferryside and St Ishmael and Tanylan cockle beds will be on foot only.
9. **No vehicles of any sort to be used.** Without prejudice to the generality of Note 1, Byelaw 48 (Vehicle Usage within the Three Rivers Estuary) of the former SWSFC provides that no person may cause or permit any mechanically propelled vehicle to stand on or pass over any part of the Three Rivers Estuary (for our purposes) without the prior written authority of the Welsh Ministers.
10. **Boat only removal of taken cockle.** The area of water covering the Three Rivers Estuary is defined as “at sea”. A vessel involved in any manner with regard to the transportation of personnel, equipment or cargo for cockling in the area will be operating commercially. Any vessel operating for commercial purposes, must comply with relevant United Kingdom Merchant Shipping Legislation. Further information on this legislation can be sought from the MCA website, <https://www.gov.uk/government/organisations/maritime-and-coastguard-agency>
11. The areas of suspension of temporary closure and continued temporary closure are shown below for information purposes only.



FURTHER INFORMATION

Further notifications and additional information relating to this suspension of temporary closure can be obtained by contacting:

Marine and Fisheries Division
Welsh Government
Suite 3, Cedar Court
Havens Head Business Park
Milford Haven
Pembs SA73 3LS

Tel: 0300 025 3500

Email: marineandfisheries@gov.wales